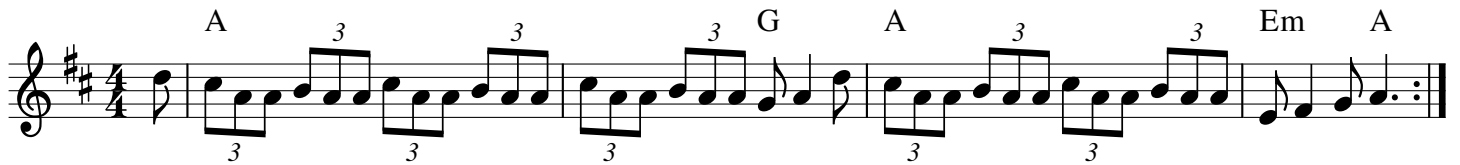


I'm a Rover



A D A F#m D E
Though the night be dark as dungeon, Not a star to be seen above.

A D A F#m E A
I will be guided, without a stumble, To the arms o' me only love.
I went up to her bed room window, Kneeling gently upon a stone.
I rapped on her bedroom window, "My darling dear do you lie alone?"

For, I'm a rover seldom sober,
I'm a rover of high degree.
An' when I'm drinkin', I'm always thinking
Of how to gain my loves company.

Instr. like Intro

She raised her head from her feather pillow, Raised her arms up around her breasts.
Sayin', "Who's at me bedroom window Disturbing me at me long night's rest?"
"It's only me, you own true lover, Open the door and please let me in
For, I have come a long nights journey, And I'm near drenched to the skin."

Chorus + Instr. like Intro

She opened the door with the greatest pleasure! Opened the door, and she let me in!
We both shook hands and embraced each other Til the morning we lay as one!
"But now, Me love, I must go and leave you. Though the mountains be high above.
Well I will climb them with greater pleasure, That I've been with me only love!"

Chorus 2x first a capella + Instr. like Intro